

When you changed to daylight-saving time, **did you check your smoke alarms?**

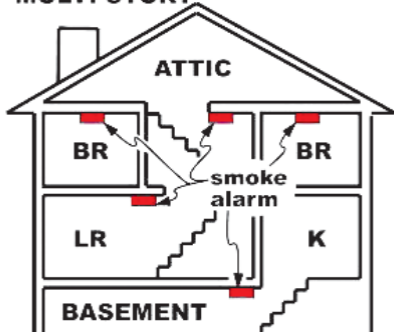
If you didn't install new batteries in your smoke alarms when you reset your clocks to daylight-saving time this spring, check them now. In addition to replacing batteries in smoke alarms at least once every year, test them monthly.

Keep these things in mind too.

- Standard smoke alarms may not reliably wake children under the age of 16. If you have children, look for smoke alarms that use an electronic voice (or record your voice) to announce an alarm.
- Various home configurations and locations of smoke alarms can limit the transmission of sound throughout the house.
- Interconnected smoke alarms can provide earlier warning of smoke and fire; placing them inside bedrooms can provide improved warning when bedroom doors are closed.
- You also should replace your smoke alarms every 10 years, since the sensors inside can degrade due to environmental contamination and age.

PLACE ONE SMOKE ALARM ON EVERY FLOOR AND SLEEPING ROOM

MULTI-STORY



SINGLE LEVEL

